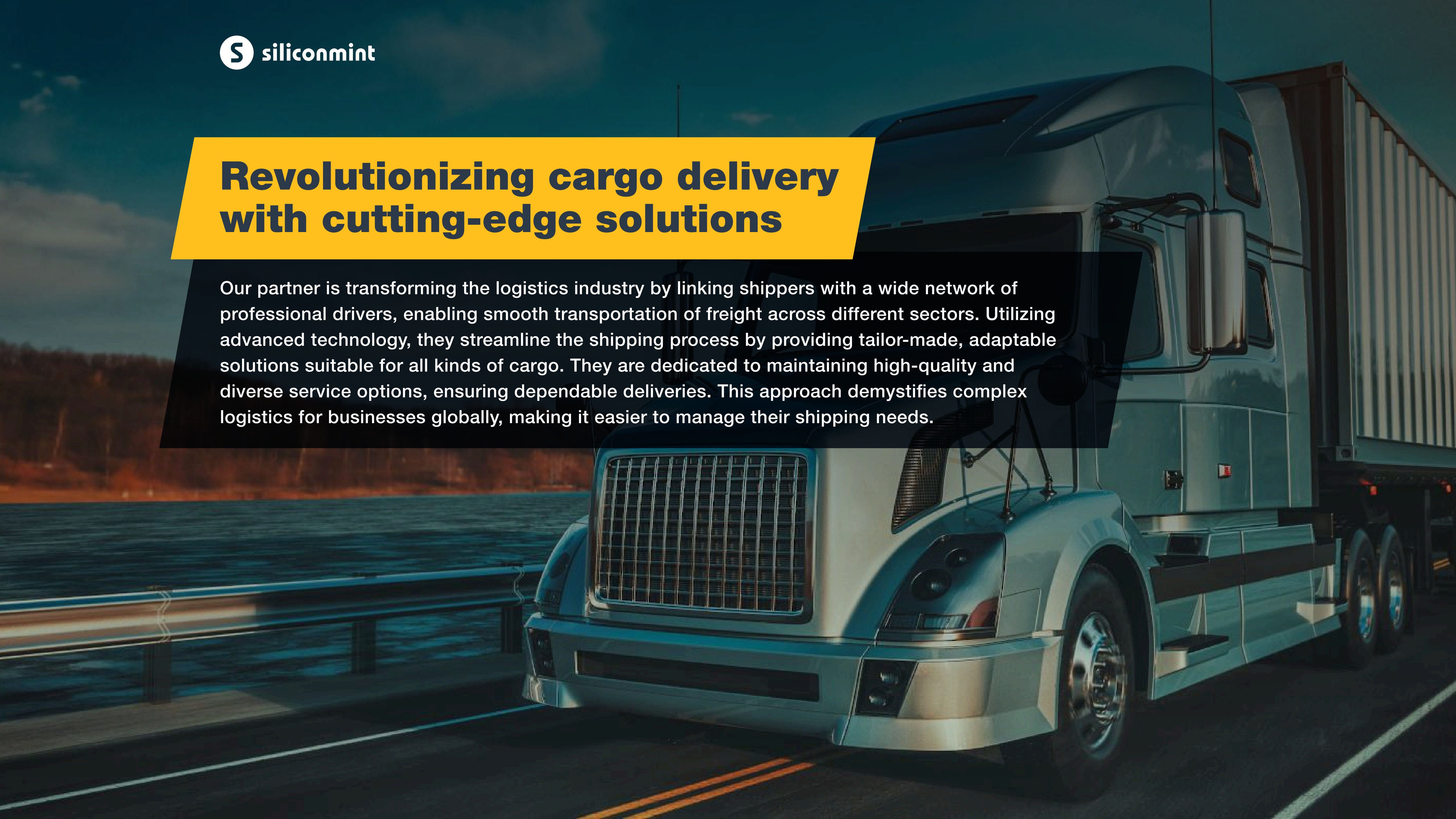


## **Revolutionizing cargo delivery with cutting-edge solutions**

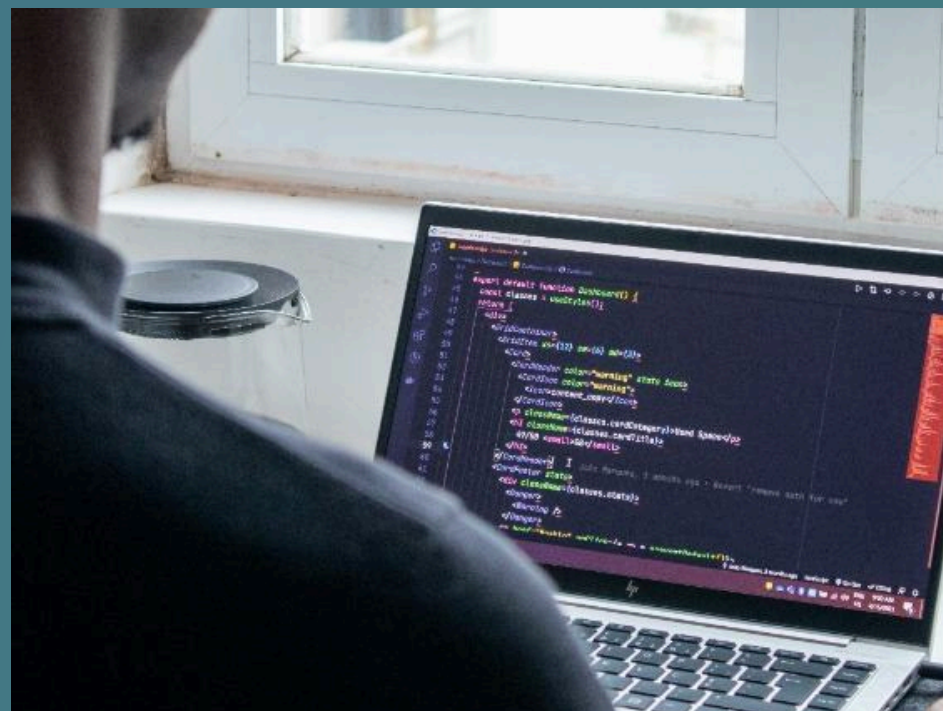
Our partner is transforming the logistics industry by linking shippers with a wide network of professional drivers, enabling smooth transportation of freight across different sectors. Utilizing advanced technology, they streamline the shipping process by providing tailor-made, adaptable solutions suitable for all kinds of cargo. They are dedicated to maintaining high-quality and diverse service options, ensuring dependable deliveries. This approach demystifies complex logistics for businesses globally, making it easier to manage their shipping needs.



# The challenge

## Business

- To assume complete control and ownership of the project, moving from partial involvement to comprehensive management and strategic alignment of all operations.
- To integrate and to improve integration process with our partners was crucial for expanding our service capabilities
- To take charge of developing and implementing critical, time-sensitive features and functionalities, areas the existing team could not focus on due to limited resources.



## Technical

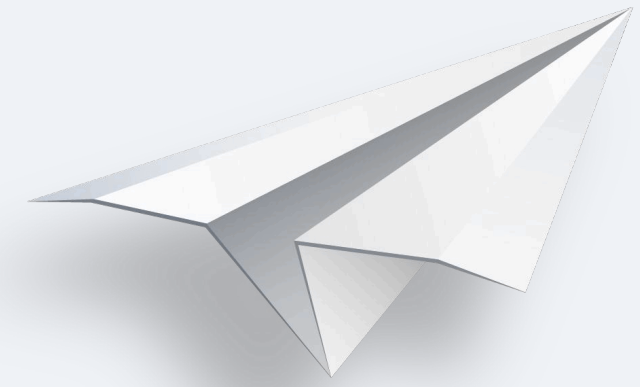
We're tackling a technical challenge to make our system more efficient and scalable. Our approach includes expanding automation testing to speed up deliveries, refactoring the architecture for easier integration with new partners, and redesigning the system into a service-oriented architecture. This will allow us to isolate and expedite critical feature updates without impacting the entire system, ensuring quicker, more reliable delivery of services.



# Solution

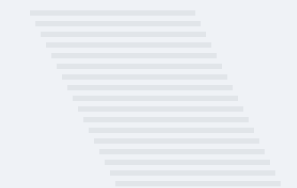
## 1 Developed new services

We developed services for features transitioned from the monolithic architecture, as well as services for entirely new features.



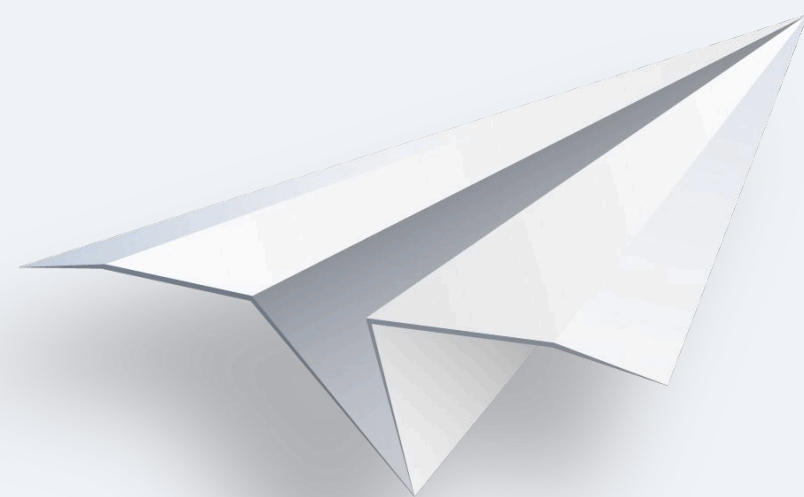
## 2 Configured CI/CD pipelines for new services

Reviewed and updated existing CI/CD pipelines and created new pipelines for additional services

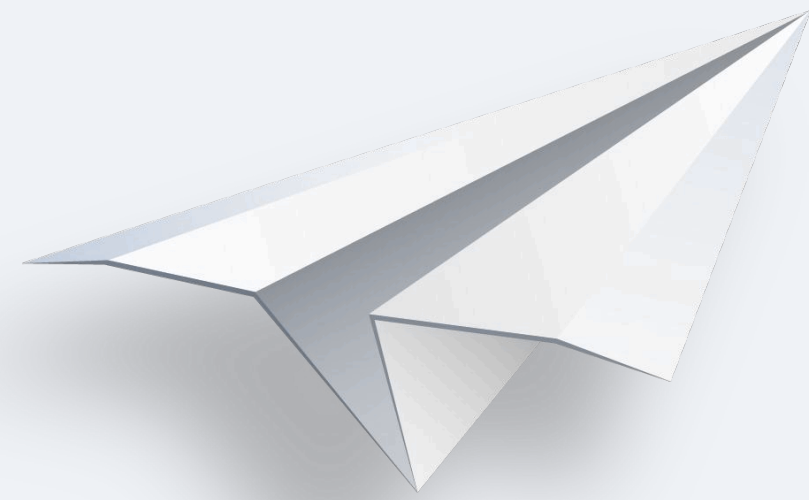


## 3 Improved architecture of existing monolithic application

Optimized third-party API interactions with a streamlined, generic approach and revamped our business layer by reducing redundancy and complexity in feature-rich classes, etc.



# Solution



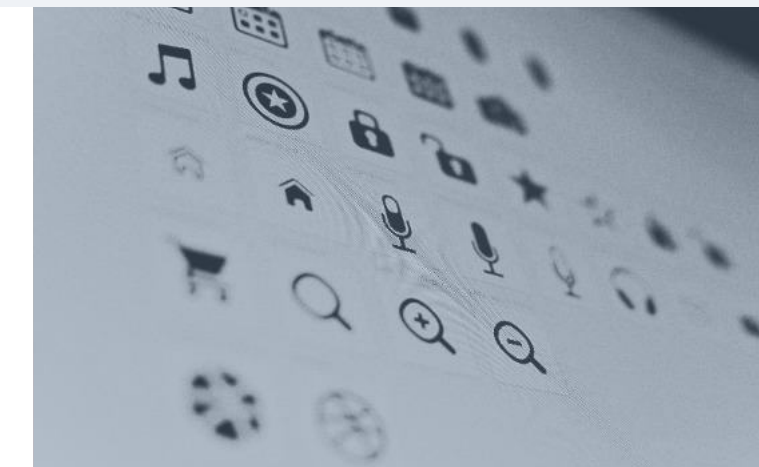
## 4 Configured infrastructure

Created Terraform scripts for automatic infrastructure setup (AWS)



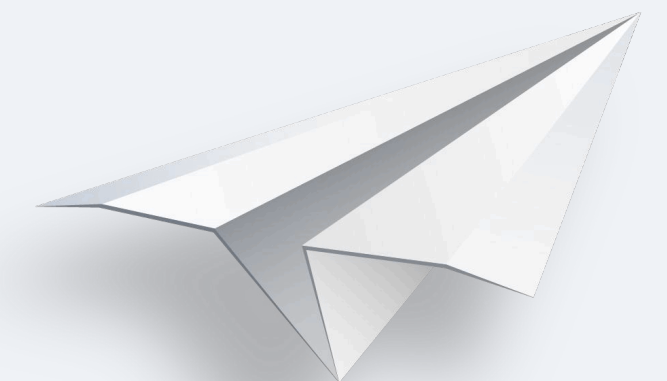
## 5 Continued to improve UI

Provided UI/UX design services and are continuously working on UI updates

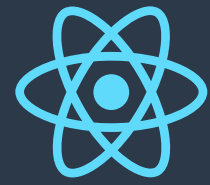


## 6 Integrated with key partners

Integrated with our partner's API and services to receive delivery requests, allowing clients to use our platform as a one-stop solution for all their shipments. Provided an API that offers a seamless, powerful solution for integrating our services into partners' platforms.



## Technologies



**React**



**JavaScript**



**Tailwind CSS**



**Node.js**



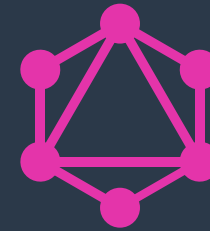
**MongoDB**



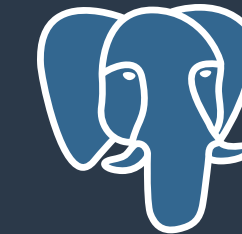
**Mongoose**



**Express.js**



**GraphQL**

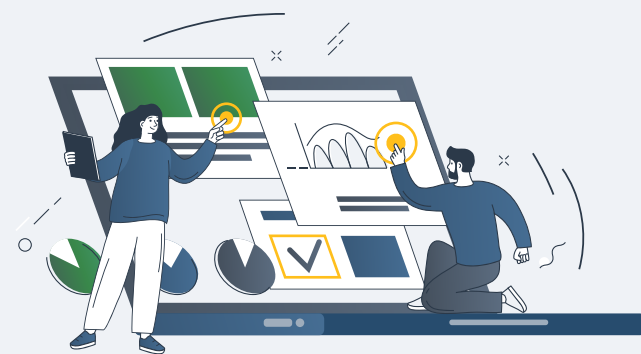


**PostgreSQL**



**AWS**  
(S3, Lambda, SQS, etc.)

## Team



**Scrum team**

dedicated to architectural improvements and integrations



**Scrum team**

focused on new feature development



# Architecture

